

Valérie

A symphony of elegance and power





The Megayacht

Valerie is an exceptional megayacht in every sense of the word. With an impressive volume of 2,755GT spread over six decks she provides everything you can imagine aboard a modern floating palace and more. Accommodation is for 17 guests in nine well-appointed cabins served by 27 crew. High ceilings of 2.3 metres and full-height windows provide unparalleled sea views throughout. A host of on-board amenities range from the fully equipped spa with hammam to the heli-deck and expansive private sundeck featuring a 6-metre swimming pool. Moreover, an elevator serves all deck levels with additional waterline guest boarding access.

Valerie's unique character is a combination of contemporary exterior styling by the renowned Espen Øino with stunning interior design by Raymond Langton with rich details and Art Deco elements.

Lürssen's legendary build quality is evident in every element of *Valerie's* design. She is a pedigree product with modern top-class systems providing unparalleled comfort and transatlantic capabilities allowing guests to enjoy any sea around the world. *Valerie* underwent an extensive refit in 2019.

























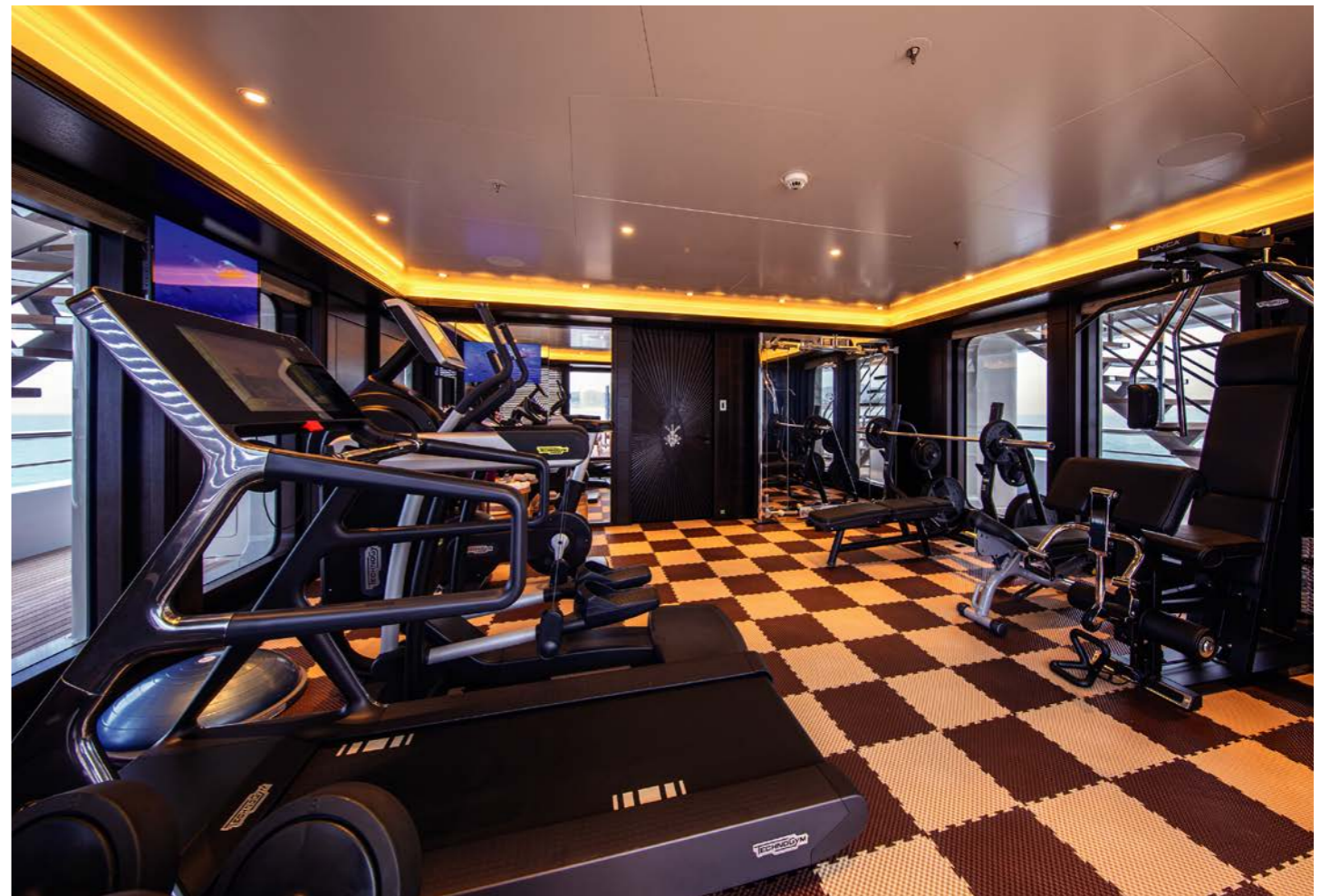














Valerie

KINGSTOWN





Specification

Length overall: 85.1 m (279' 19")
Beam: 14.28 m (46' 85")
Draft: 3.85 m (12' 85")
Tonnage: 2,755 GT

Built: 2011 (Refit 2013/2019) Lürssen

Type: Motor Yacht (LY2)
Classification: Lloyd's LY2 ✱ 100 A1, SSC, YACHT (P), MONO, G6
✱ LMC, UMS

Material: Steel hull, aluminum superstructure

Max. speed: 17 knots
Cruising speed: 12 knots
Range: 6,000 nautical miles @ 12 knots

Main engines: 2x MTU 16V4000 M61, 2000 kW
Propulsion: Shafts and propellers

Fuel: 248 t
Fresh water: 40.5 t

Generators: 1x 498 kW, 2x 322 kW MTU
Stabilizers: 2x Quantum Marine zero speed stabiliser

Guest accomodation: 17 in 9 cabins
Crew: 27 in 13 cabins

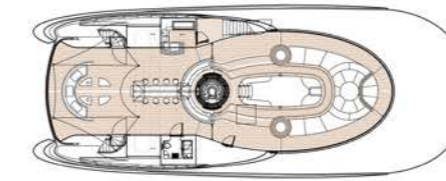
Tenders:
1x 10m Royal Tender Landing Craft
1x 10m Royal Tender Limo
1x 6,25m Fassmer Rescue boat
1x Yamaha FX Cruiser SVHO wave runner
2x Yamaha FZR wave runners

Helipad: Touch & Go, Eurocopter EC 130 or similar

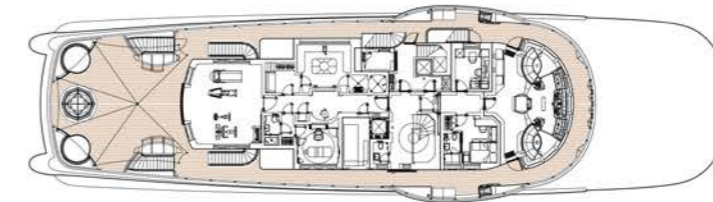
Exterior design: Espen Øino
Interior design: Reymond Langton Design

Deck plans

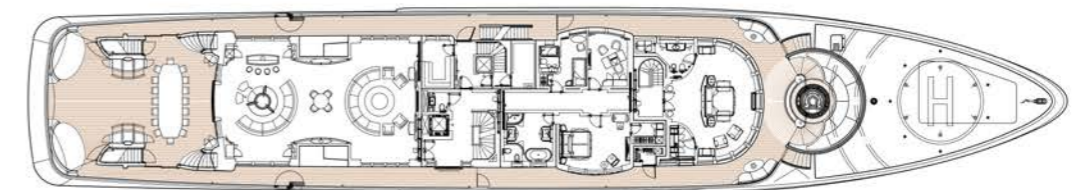
Sun deck



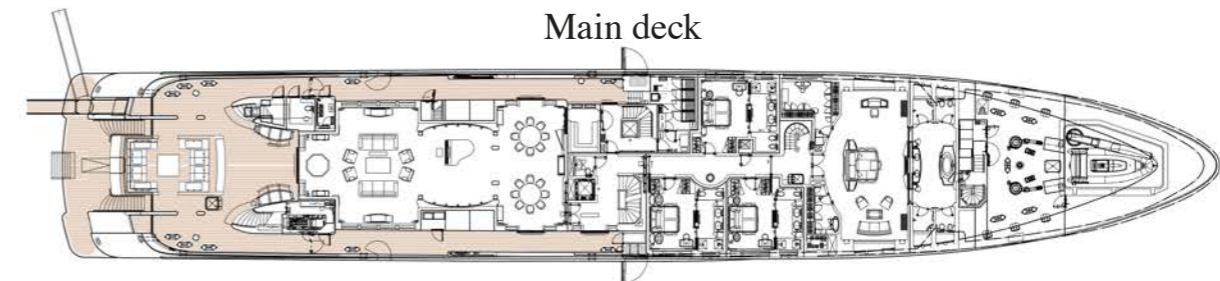
Bridge deck



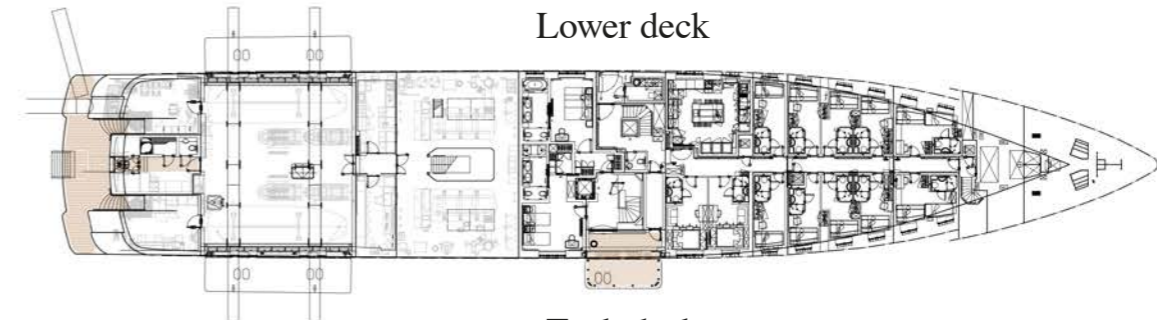
Upper deck



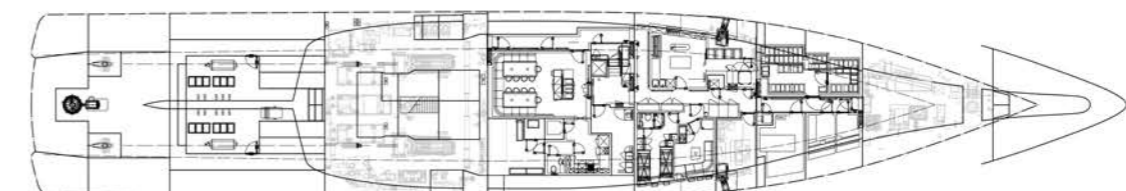
Main deck



Lower deck



Tank deck







Tenders & toys

1x 10m Royal Tender Landing Craft
1x 10m Royal Tender Limo
1x 6,25m Fassmer Rescue boat
1x Yamaha FX Cruiser SVHO wave runner
2x Yamaha FZR wave runners



Full brochure, video and specifications available upon request. Please contact your preferred broker.