



Barents Sea

Mondomarine 42m





■ This unique semi-displacement 42m Mondomarine assures an enjoyable and safe cruise to your desired destinations in the Med







main saloon & dining area







The main deck features a saloon and dining area with minimalist design and Italian styling ■





The impressive full beam master cabin located on the main deck is a piece of art ■



The large windows and wave design of the walls actually provide the sensation of being right next to the sea ■



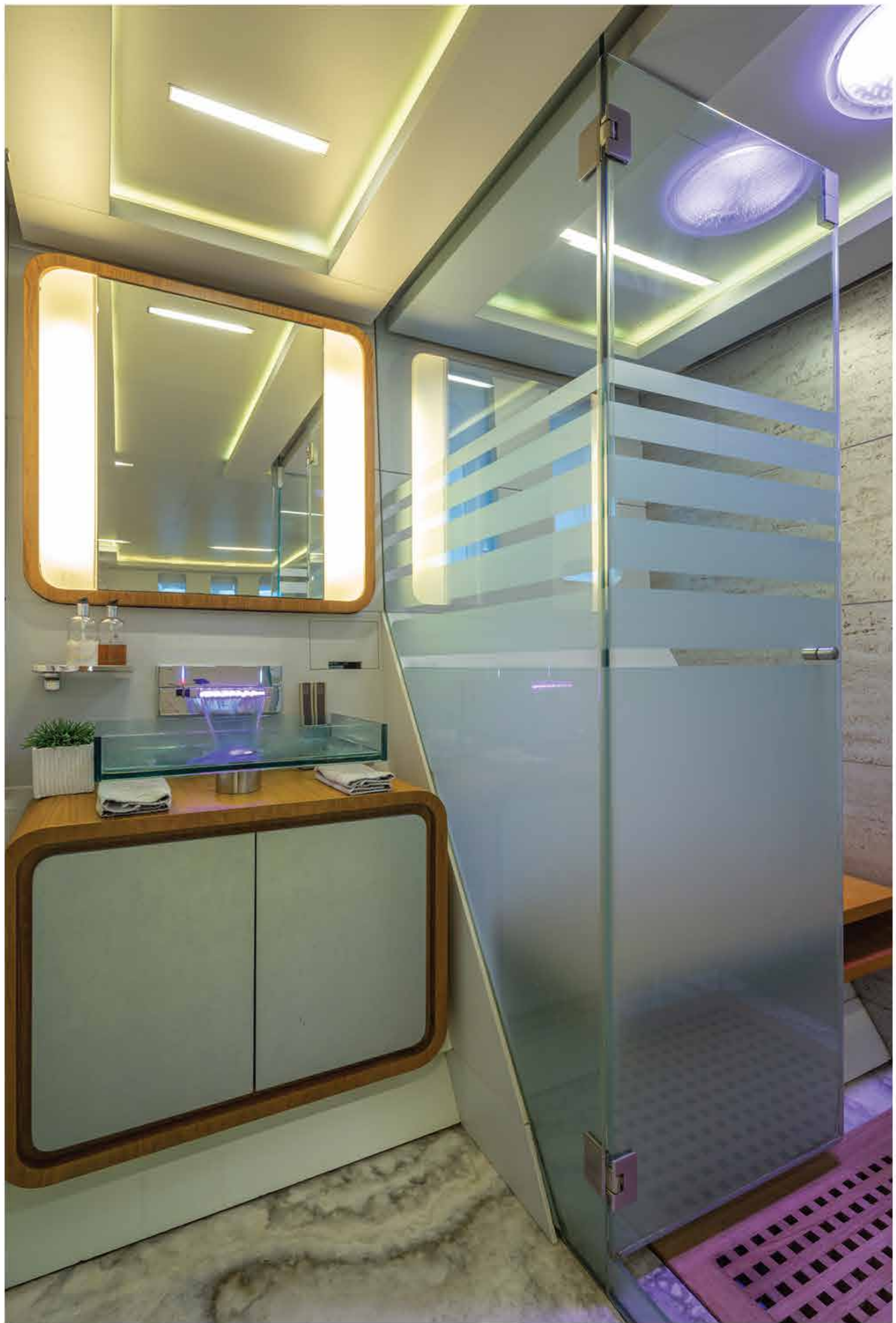
KAAREN KOEINI
MIAHSAAN
KAI TA BOVNA
MIAHSAAN





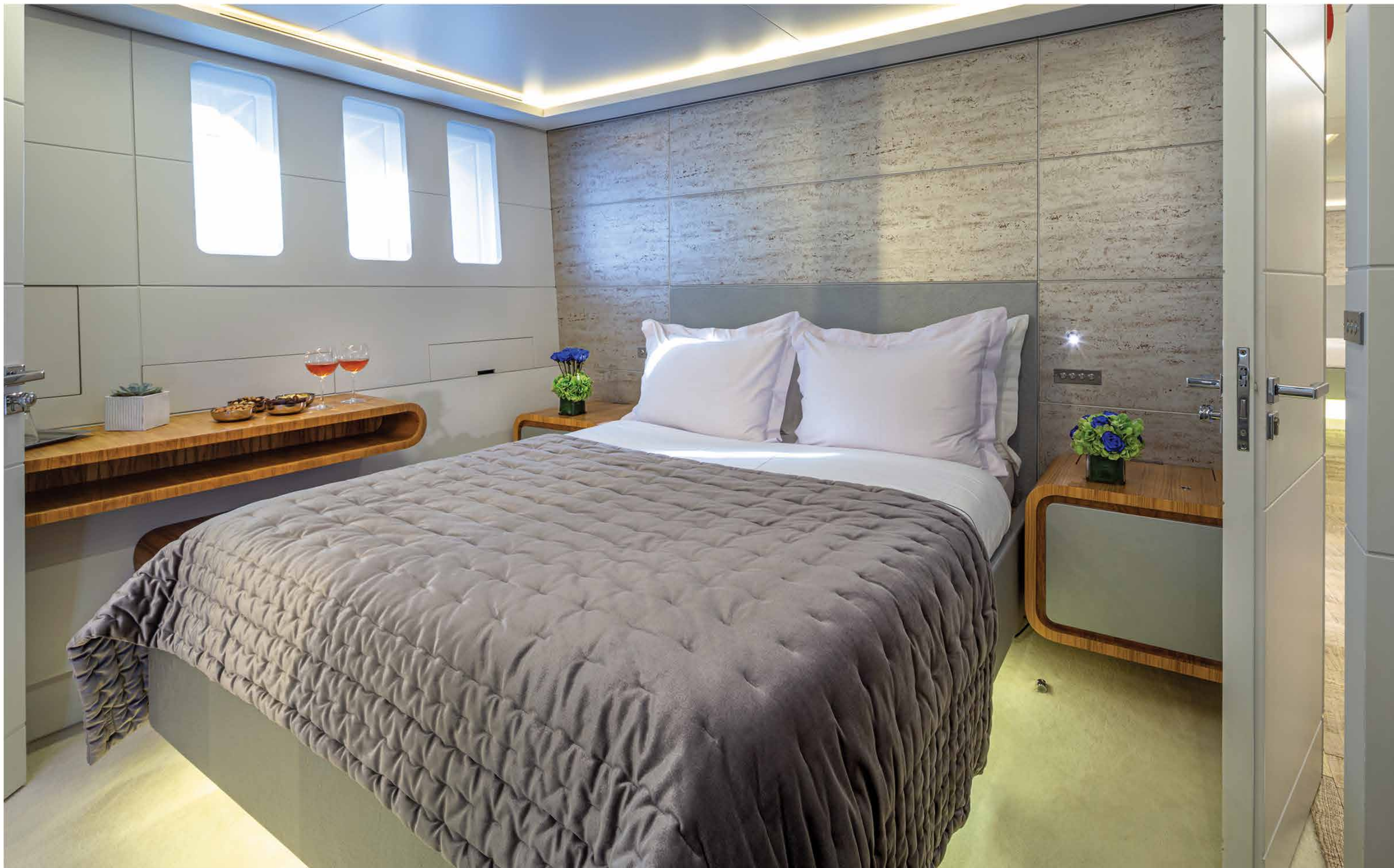






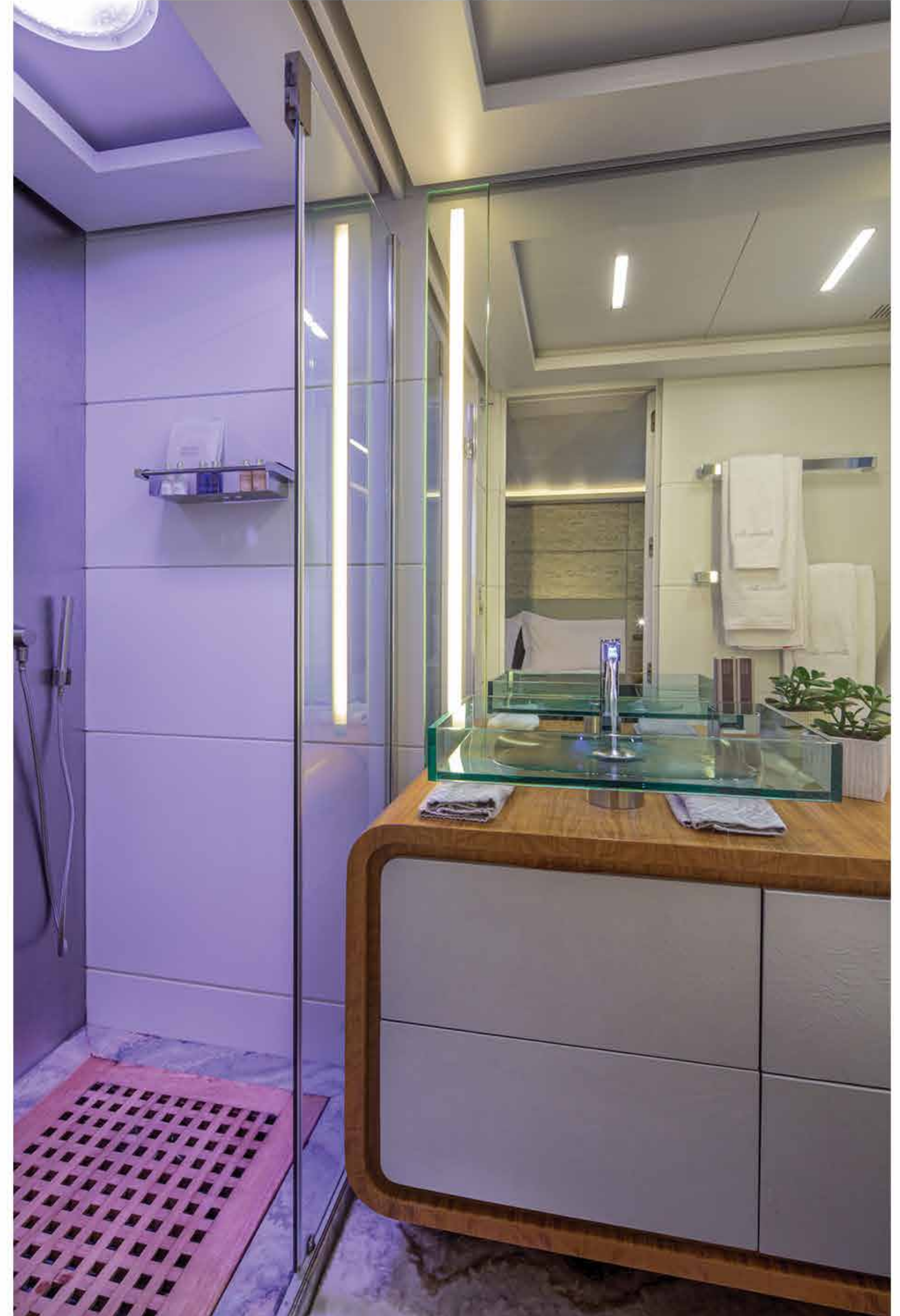
The ensuite facilities are absolutely marvelous, with the trend of led lighting, the faucets and showers light up and create an atmosphere of your desire ■

double cabin





The lower deck features the contemporary VIP cabin, the two double and two twin cabins which maintain the modern design that is kept throughout the yacht ■



■ twin cabin



■ upper saloon











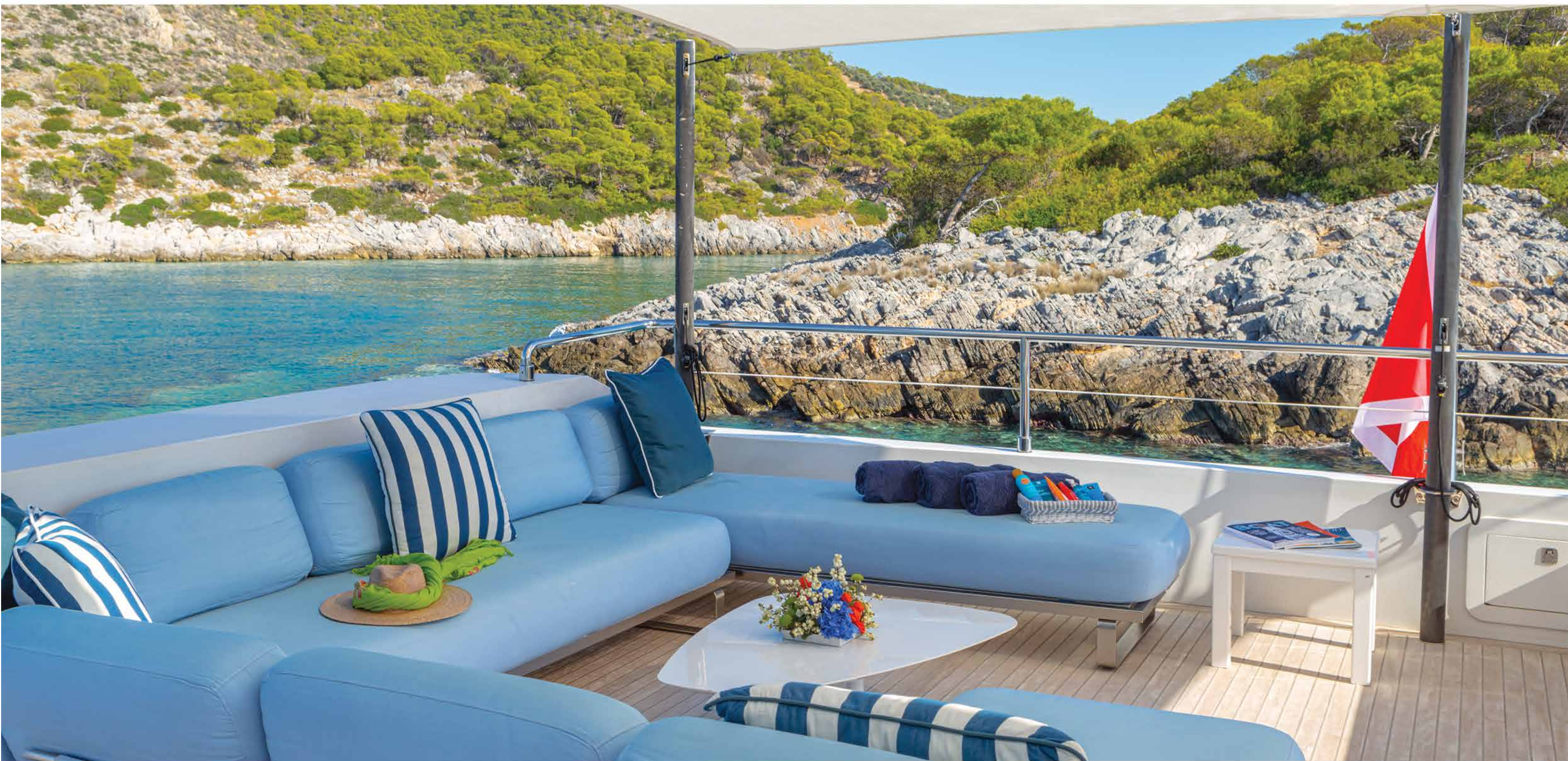
The aft deck area is a delightful spot for dining while enjoying the stunning views ■



On the ample upper deck, you can enjoy an evening drink by the illuminated bar, a dip in the Jacuzzi or just relax around the lounge area



The dining area on the upper deck is the perfect place for meals under a cool shade. The table can lower and convert to a coffee table. ■





■ bow deck













■ swimming platform



■ The large garage is the host of a wide variety of water toys while the swimming platform offers easy access to the crystal clear Greek waters.







Specifications ■

Length: 41.76m (137')

Beam: 8.18m (26' 10")

Draft: 2.44m (8')

Year Built/Refit: 2008/2018

Builder: Mondomarine

Number of Cabins: 6

Total Guests: 12

Crew: 8

Engines: 2 x 2.285 hp MTU (Model 12V 396 TE94)

Generators: 2 x 80kw Northern Lights

Cruising speed: 17 knots

Engines consumption: 650 ltrs/hr

Generators consumption: 350

Zero Speed stabilizers

Wi-Fi Internet System

Satellite TV

Jacuzzi on the upper deck



Accommodation ■

One Master cabin with a King size bed and a walk in closet on main deck

One VIP cabin with a King size bed

Two Double cabins with a Queen size bed and

Two Twin cabins with a pullman berth each on lower deck

All with marvellous ensuite facilities with the trend of LED lighting where you can create an atmosphere of your desire/chromotherapy



Audio Visual Equipment ■

High End entertainment centralized system with remote controls in every room

Home theatre system in all cabins & saloon

New High Definition Audio/Video Equipment

Apple TV and amplifiers in saloon

Facilities to connect your USB HD, Cameras and Smart Phones and listen to your favorite music, watch your movies and enjoy your photos on the High End TV Screen in saloon.

High definition projector in upper saloon

DVD with surrounding sound and option of various movies to be stored

CD player

i-Pod docking station

Installation of Domotic system

Extron controllers through i-Pad

Hi-Fi with centralized system in wheelhouse.

Playstation



■ Tenders & Water Toys

Chase Tender 10m Great White 2 x150hp Yamaha engines

Tender 5.40 m Novurania with 190 hp Volvo penta

2 Sparks Seadoo (2 seater)

3 x F5 Seabobs

Kayak board with glass bottom

Water skis

Tubes

Banana

Banana Chaser for 3 pax

2 water tubes Jobe for 1 pax

Wakeboard

Paddle Board

Canoe

Fishing & Snorkeling Equipment including:

4 new full face snorkeling masks



