

ELENI

C H A R T E R Y A C H T















































KEY FEATURES

- ▶ Fully equipped and air conditioned gymnasium
- ▶ Zero Speed Stabilizers
- ▶ 11m Chase tender
- ▶ Inflatable Slide
- ▶ Accepts up to 50 guests for quay side events
- ▶ Extensive refit in 2017 / 2018

TOYS AND TENDERS

- ▶ 6.5m Castoldi Jet dive tender with 240 hp Yanmar engine
- ▶ 11m Wellcraft Scarab chase boat, model: 35CCF2x, chase boat will be towed on longer crossings
- ▶ 2 x Seadoo Jetskis
- ▶ Inflatable Slide
- ▶ Inflatable stand up paddle boards
- ▶ Inflatable towable donuts
- ▶ Inflatable towable 3 person couch
- ▶ 1 x waterskis
- ▶ 1 x wakeboard
- ▶ 2 x Seabobs

ELENI

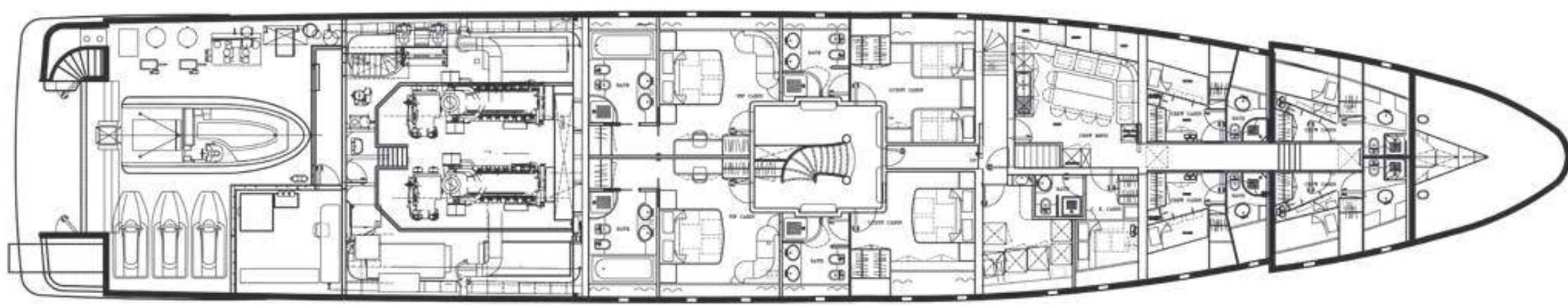
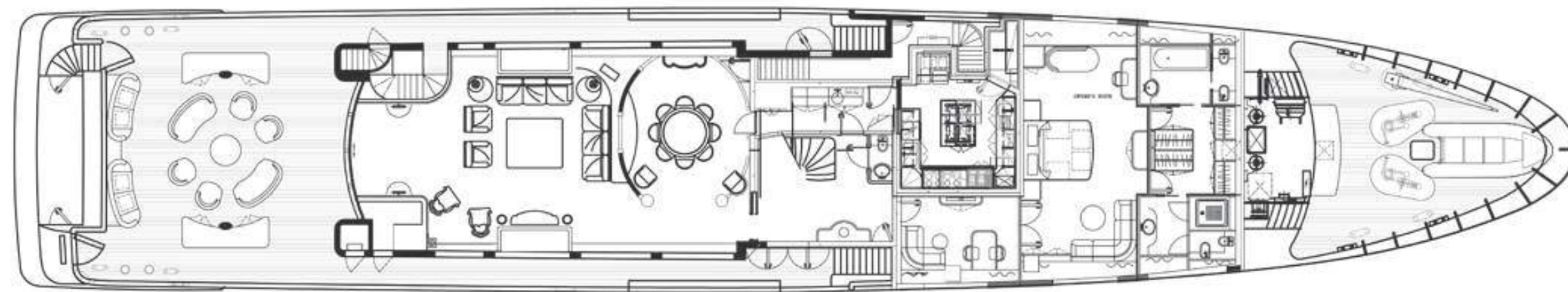
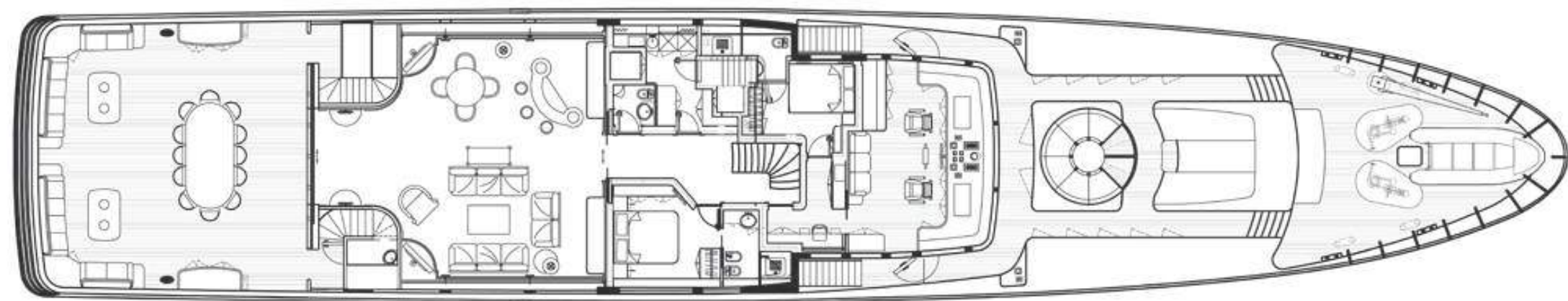
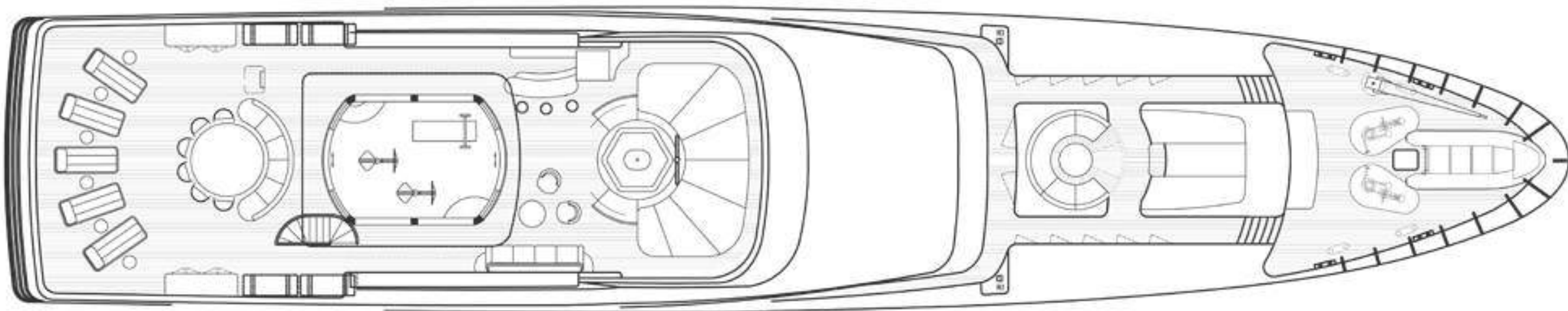


SPECIFICATIONS

Accommodates	12 Guests in 6 Staterooms
Arrangements	1 King, 4 Queen, 2 Single
Length	164' (50.00m)
Beam	30'6" (9.30m)
Draft	10'2" (3.10m)
Year / Refit	2005 / 2017
Builder	CBI Navi
Engines	2x Caterpillar 35146B-DITA @ 1641 kW 2200hp
Cruising Speed	13 knots
Max Speed	16 knots
Fuel Consumption	550 Litres/Hr



GENERAL ARRANGEMENT



ELENI

C O N T A C T Y O U R C H A R T E R B R O K E R